

# Dubai Skyline Views I

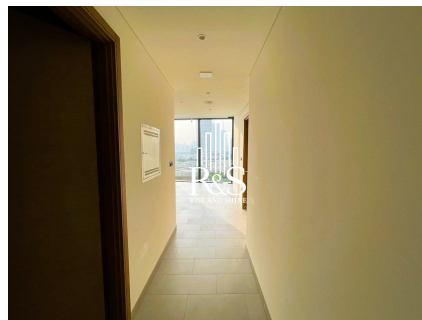
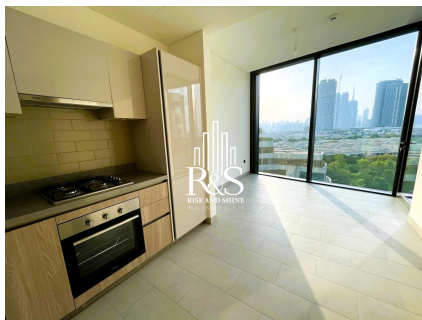
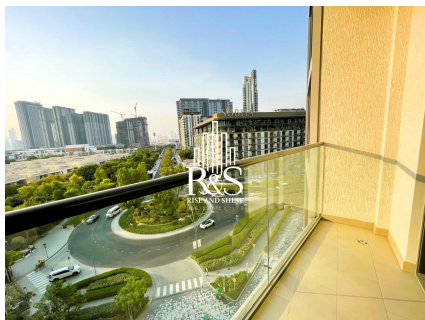
## Amazing layout I

## Unfurnished



[riserealtydxb@gmail.com](mailto:riserealtydxb@gmail.com)

Dubai, Mohammad Bin Rashid City  
[25.175591](tel:25.175591), [55.309586](tel:55.309586)



### Sobha Hartland Waves

Presenting a pristine, mid-floor 1-bedroom apartment in Hartland Waves within the exclusive, green heart of Sobha Hartland. Property Highlights: – Spacious 1-bedroom with built-in wardrobes – Bright, open-plan living and dining area – Fully-equipped kitchen with premium appliances– Modern bathroom with high-end finishes– Private balcony with stunning city views – Central air conditioning and contemporary lighting–High-quality finishes throughoutCommunity & Lifestyle: Residents of Sobha Hartland enjoy a resort-style living experience with access to world-class amenities, including sparkling swimming pools, state-of-the-art fitness centers, children's play areas, and scenic running and cycling tracks along the Dubai Water Canal. The community offers unparalleled convenience with easy access to Downtown Dubai, DIFC, and Al Khail Road. This is a perfect home for professionals, couples, or investors seeking a high-quality rental in a top-tier location. Contact us today at Rise & Shine Real Estate to schedule an exclusive viewing of this exceptional property.

PROPERTY FEATURES: –Balcony –Basement parking –BBQ area –Built in wardrobes –Central air conditioning –Central heating –Community View –Fully fitted kitchen –Gymnasium –Kitchen white goods –Sauna –Shared swimming pool –Steam room –View of gardens –24 hours Maintenance –Bank/ATM Facility –Children's nursery –Children's play area –Communal gardens –Cycling tracks –Fitness Center –Laundry Service –Mosque –Public park –Public parking –Restaurants –School –Shopping mall –Shops

### Overview

Purpose Sale

Sale Price AED 1,399,900

Size 525 sqft

Bathrooms 1

**Contact Details**

[riserealtydxb@gmail.com](mailto:riserealtydxb@gmail.com)

[riserealtydxb.com](http://riserealtydxb.com)

