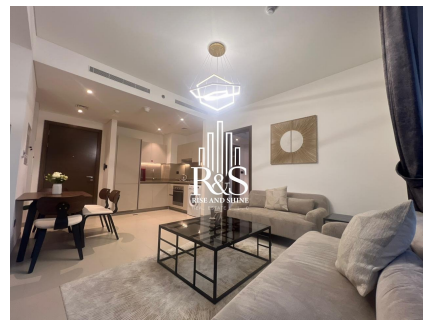
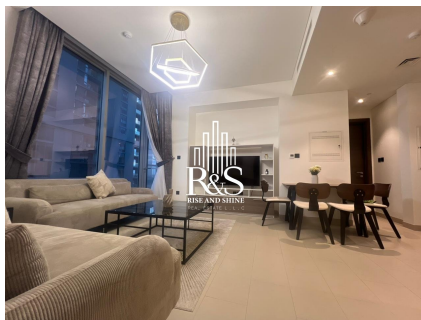


Fully Furnished Brand New Ras Alkhor and BURJ VIEW

Dubai, Mohammad Bin Rashid City
[25.168163](tel:25.168163), [55.276890](tel:55.276890)



riserealtydxb@gmail.com



Sobha Creek Vistas Tower A

Fully New Furnished 2 Bedroom with Stunning Dubai Creek View and Ras Alkhor and Burj View from the Balcony

Experience elegant urban living in **Sobha Creek Vistas**, located in the prestigious **Sobha Hartland community** of **Mohammed Bin Rashid City (MBR City)**. This stunning apartment offers a perfect blend of **luxury, comfort, and breathtaking views** of **Downtown Dubai, Dubai Creek, and the lush Hartland landscapes**.

Designed with modern architecture and high-quality finishes, the residence features **spacious layouts, floor-to-ceiling windows**, and **premium fittings** throughout. The open-plan living area connects seamlessly with a stylish kitchen equipped with top-notch appliances, creating the ideal space for both relaxation and entertainment.

Residents of Sobha Creek Vistas enjoy **world-class amenities**, including:

A temperature-controlled swimming pool

Fully equipped gym

Landscaped gardens and outdoor spaces

Dedicated covered parking

24-hour security and concierge services

Conveniently located near **Downtown Dubai, Business Bay, and Dubai Creek Harbour**, this

development offers quick access to **Ras Al Khor Road** and **Al Khail Road**, ensuring smooth connectivity to the city's key destinations.

Overview

Purpose Rent

Sale Price AED 119,900

Size 805 sqft

Bathrooms 2

Contact Details

riserealtydxb.com

riserealtydxb@gmail.com

