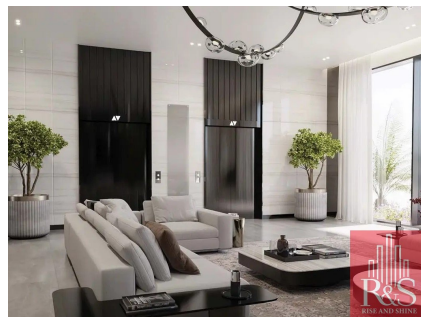
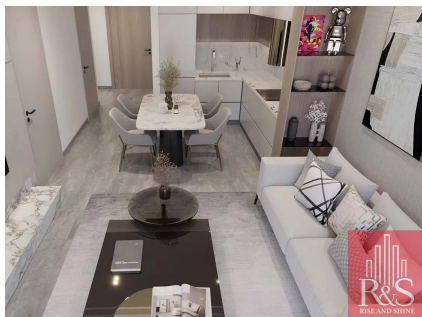
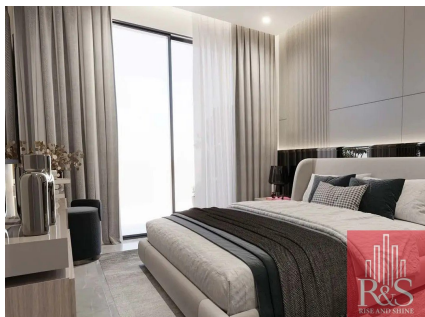


# 50/50 PHPP / Huge Layout / Handover Q4 2026

Dubai, Jumeirah Village Circle  
[25.058746](tel:25.058746), [55.209389](tel:55.209389)



[riserealtydxb@gmail.com](mailto:riserealtydxb@gmail.com)



## Samana Manhattan 1

### Layout & Apartment Finishing

#### Layout highlights for 2 bedrooms:

Each 2-bedroom unit includes: entrance hall open-plan kitchen / living / dining two bedrooms (each with built-in wardrobes) multiple bathrooms (often en-suite to at least one bedroom).

Many 2 bedroom apartments are **with a private pool on the balcony/terrace**.

Floor-to-ceiling windows to enhance natural light and city views for many units.

Typical building composition: ground floor + 3 podium levels + 16 residential floors.

#### Finishing & quality:

Modern architectural exterior combining glass and metal for the faade.

Inside: high-quality finishes (though exact brand/fabrication details arent fully published). Developer description emphasises luxurious living experience characterised by well-thought-out layouts and high-quality finishes.

Balconies with private pool means extra structural & waterproofing considerations; this is a premium feature.

**Private pool** on balcony or terrace (for many units) adds exclusivity. Built-in wardrobes in bedrooms.

Large balcony/terrace space (besides the pool) as part of the unit. Smart home features are also

mentioned for some units.

## Overview

Purpose Sale

Sale Price AED 1,549,900

Size 1291 sqft

Bathrooms 2

## Contact Details

[riserealtydxb.com](http://riserealtydxb.com)

[riserealtydxb@gmail.com](mailto:riserealtydxb@gmail.com)

